



---

# PARK MODELS

[www.rgnservicesinc.com](http://www.rgnservicesinc.com)

Phone: 254-246-5268

Email: [contact@rgnservicesinc.com](mailto:contact@rgnservicesinc.com)

Address: 820 Industrial Loop, Breckenridge, TX 76424



# Park Model Color Chart 2023

*\*All color options are subject to change depending on availability and color combination. For custom color options please contact our main office.*



**Azalea Leaf / White Trim**

**Flagstone / Hatbox Brown**

**Flagstone / Knights Armour**

**Flagstone / White**



**Hatbox Brown / Shadow Taupe**

**Polaris / White**

**Restoration / White**

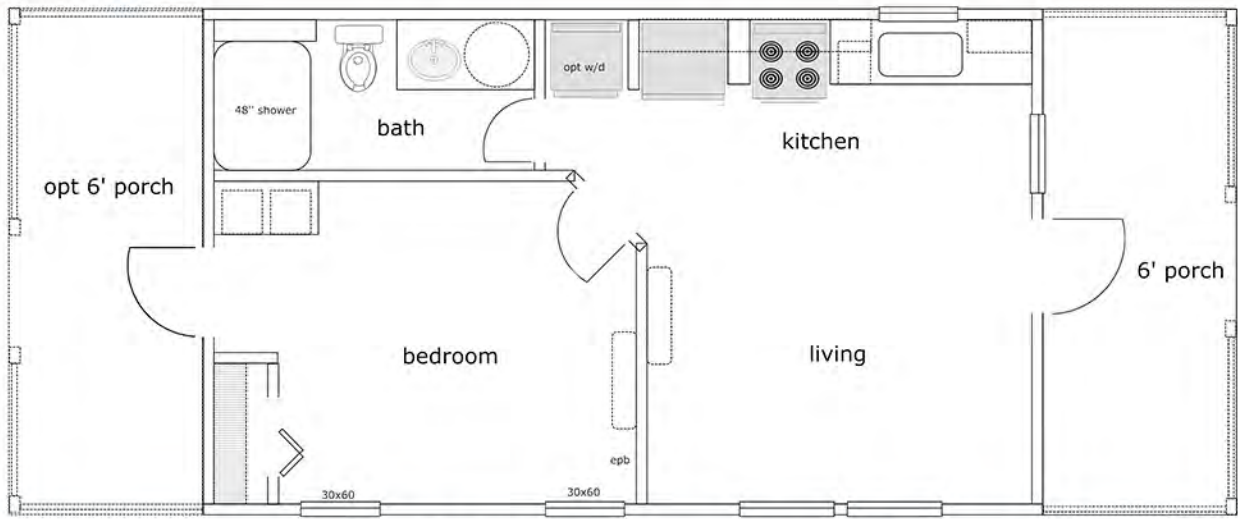
**Shadow Taupe / Sleeping Giant**

**View on website: [www.rgnservicesinc.com/park-model-home-color-chart](http://www.rgnservicesinc.com/park-model-home-color-chart)**

**NEW**

# “THE CHAPMAN 2”

(Option For Additional Back Porch)  
15x26 1x1 Park Model



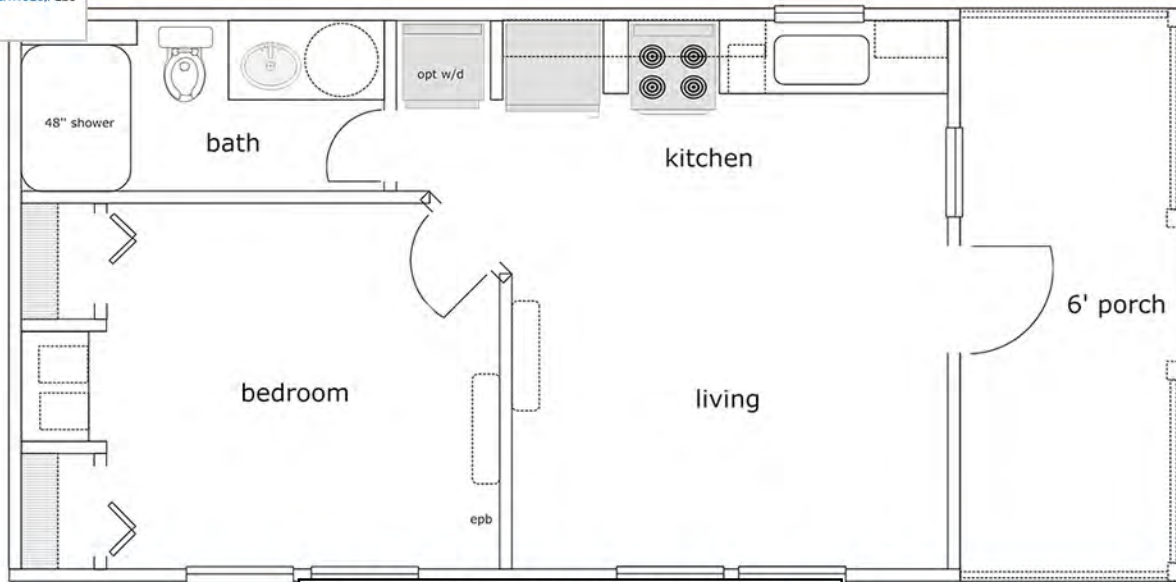
**MODEL#:PMSW1526112035**

- 8ft Sidewalls
- Flat Ceilings
- Thermal Pane Windows
- 55 Year Siding
- Steel Faucets
- Porcelain Sinks
- R Panel Metal Corrugated Roof
- 2x4 Interior Insulated Walls

[www.rgnservicesinc.com](http://www.rgnservicesinc.com)

**NEW**

# “THE CHAPMAN” 15x26 1x1 Park Model Unit



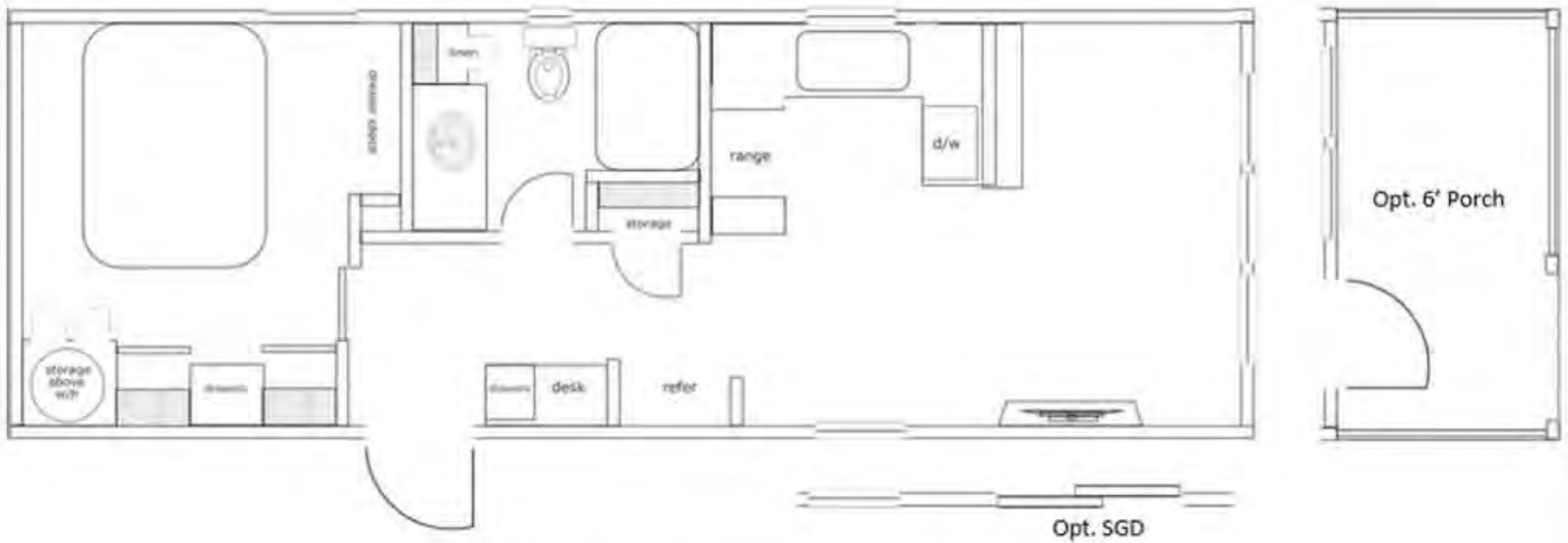
**MODEL#:PMSW1526112033**

- 8ft Sidewalls
- Flat Ceilings
- Thermal Pane Windows
- 55 Year Siding
- Steel Faucets
- Porcelain Sinks
- R Panel Metal Corrugated Roof
- 2x4 Interior Insulated Walls

[www.rgnservicesinc.com](http://www.rgnservicesinc.com)

**NEW**

# “THE DANIEL” 12x33 1x1 Park Model



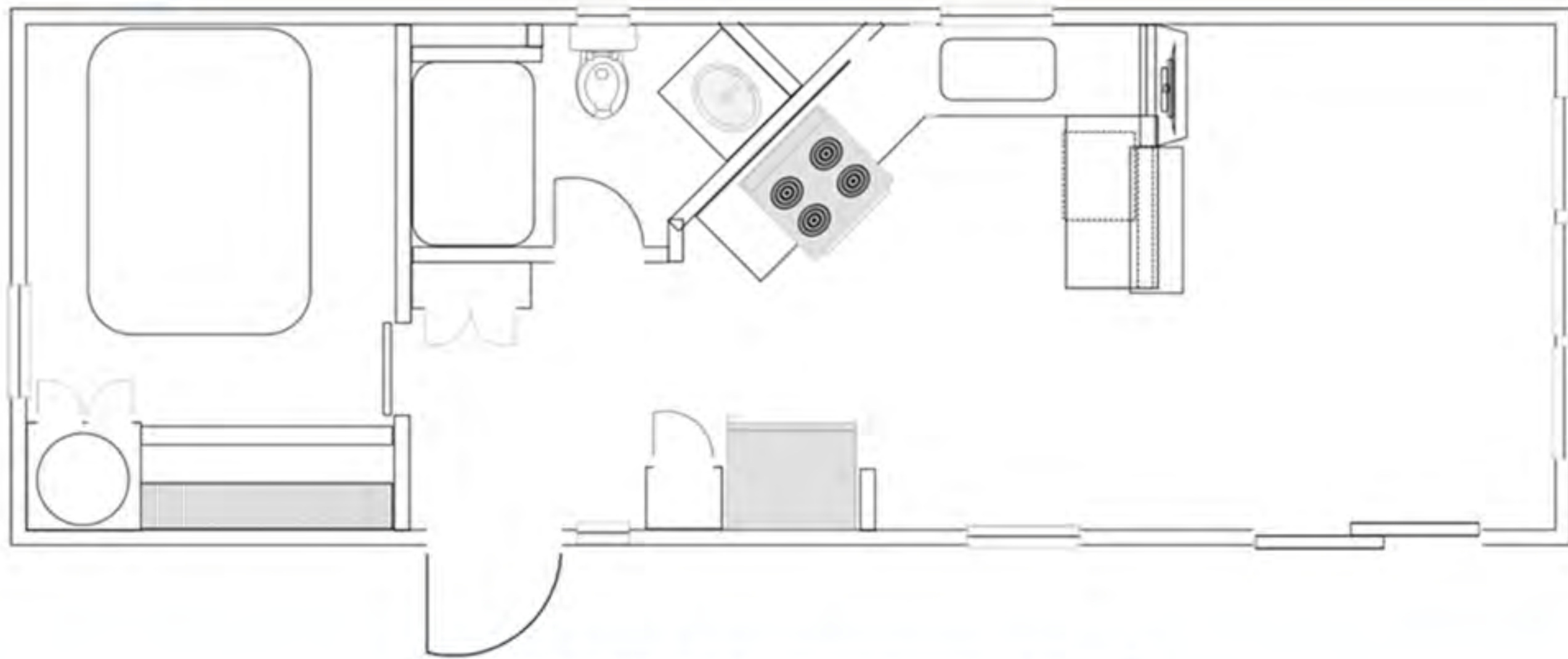
**MODEL#:PMSW1233112128**

- 8ft Sidewalls
- Flat Ceilings
- Thermal Pane Windows
- 55 Year Siding
- Steel Faucets
- Porcelain Sinks
- R Panel Metal Corrugated Roof
- 2x4 Interior Insulated Walls

[www.rgnservicesinc.com](http://www.rgnservicesinc.com)

**NEW**

# “THE DARRELL” 12x33 1x1 Park Model



**MODEL#:PMSW1233112129**

- 8ft Sidewalls
- Flat Ceilings
- Thermal Pane Windows

- 55 Year Siding
- Steel Faucets
- Porcelain Sinks

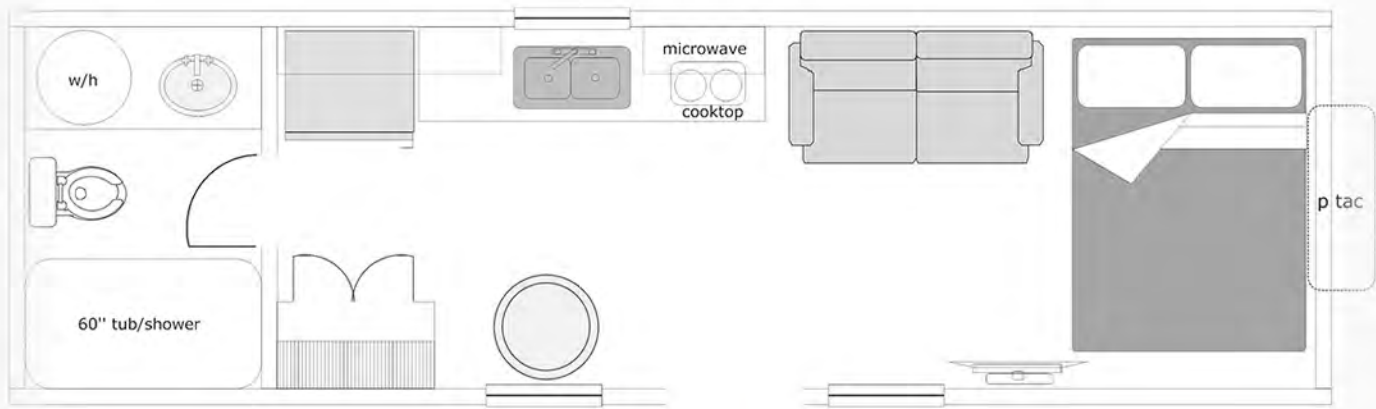
- R Panel Metal Corrugated Roof
- 2x4 Interior Insulated Walls

[www.rgnservicesinc.com](http://www.rgnservicesinc.com)

**NEW**

# “THE GIGI”

## 8x28 1x1 Park Model



**MODEL#:PMSW828112132**

- 8ft Sidewalls
- Flat Ceilings
- Thermal Pane Windows
- 55 Year Siding
- Steel Faucets
- Porcelain Sinks
- R Panel Metal Corrugated Roof
- 2x4 Interior Insulated Walls

[www.rgnservicesinc.com](http://www.rgnservicesinc.com)

**NEW**

# “THE JACKSON” 12x33 1x1 Park Model



**MODEL#:PMSW1233112109**

- 8ft Sidewalls
- Flat Ceilings
- Thermal Pane Windows
- 55 Year Siding
- Steel Faucets
- Porcelain Sinks
- R Panel Metal Corrugated Roof
- 2x4 Interior Insulated Walls

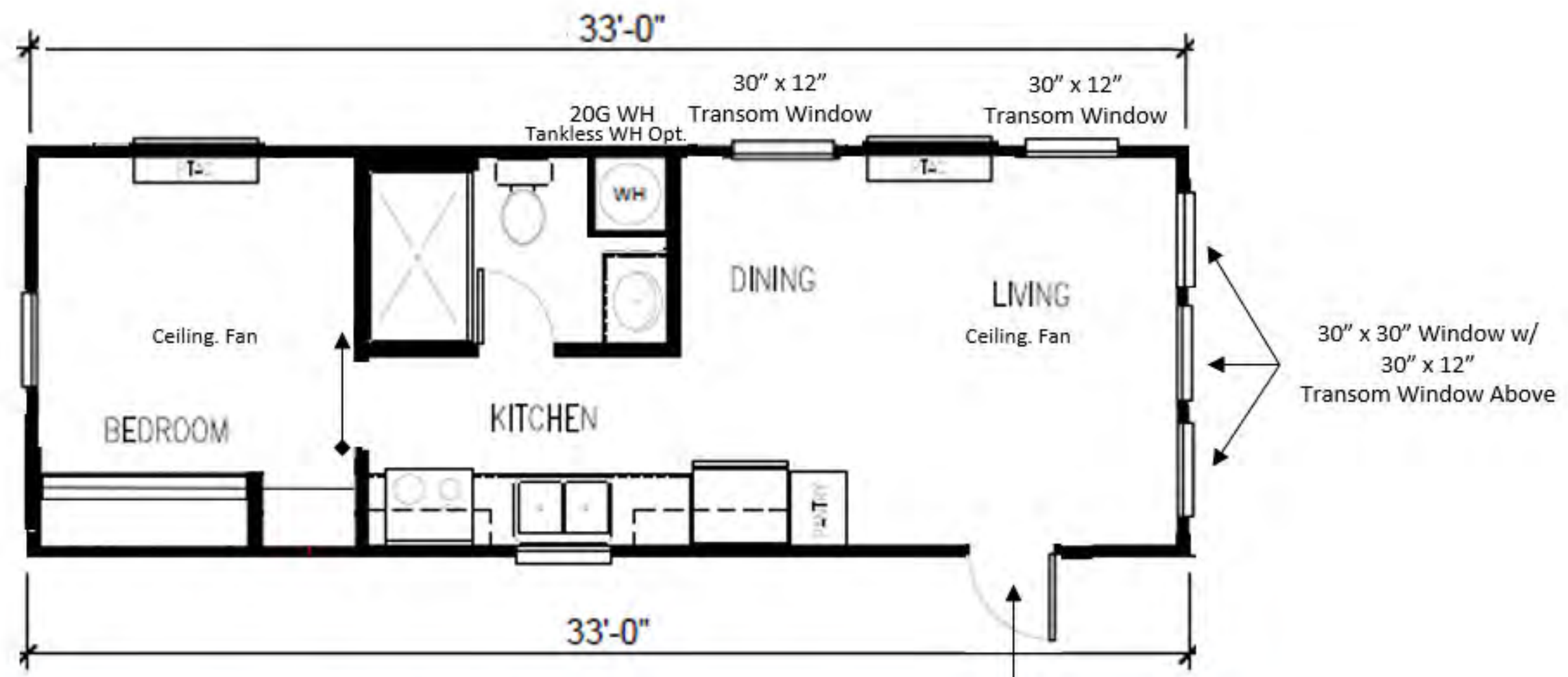
[www.rgnservicesinc.com](http://www.rgnservicesinc.com)



**NEW**

# “THE JOHN WILLIAMS”

## 12x33 1x1 Park Model



**MODEL#:PMSW1233112127**

- 8ft Sidewalls
- Flat Ceilings
- Thermal Pane Windows

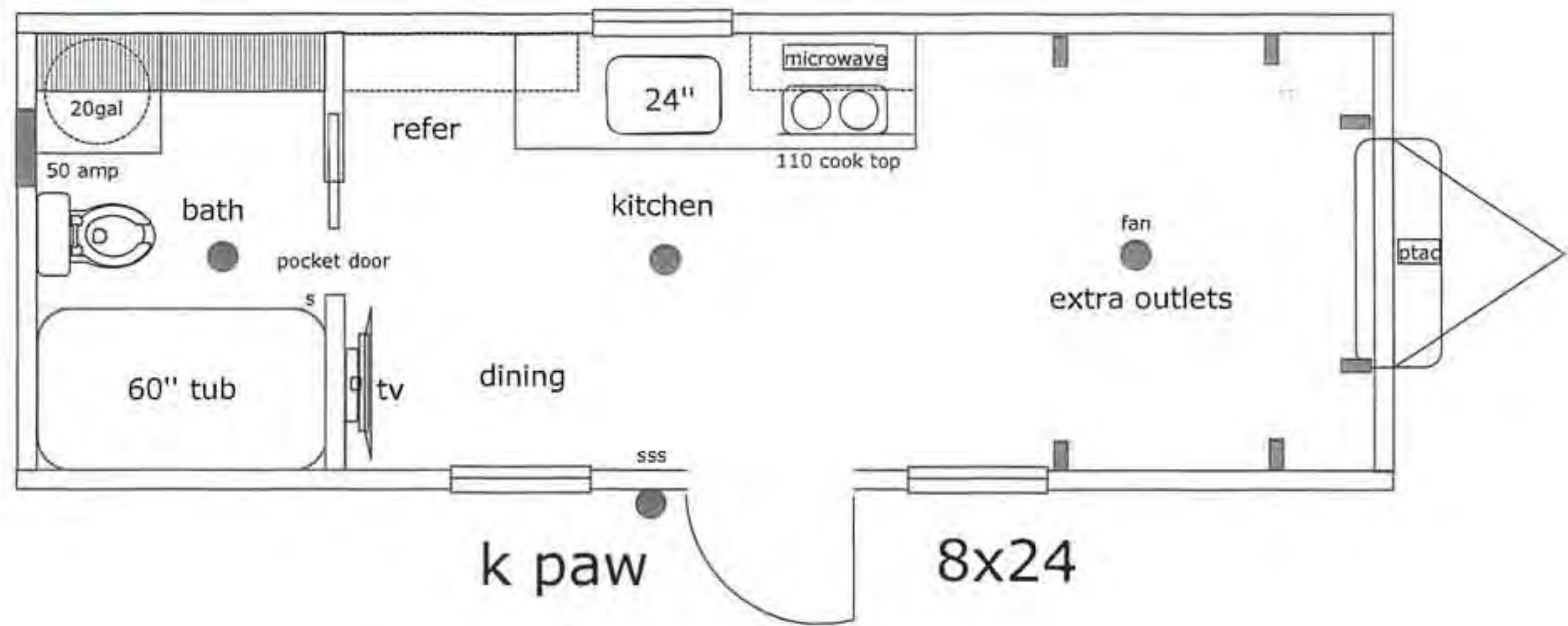
- 55 Year Siding
- Steel Faucets
- Porcelain Sinks

- R Panel Metal Corrugated Roof
- 2x4 Interior Insulated Walls

**NEW**

# “THE K-PAW”

## 8x24 1x1 Park Model Sleeper Unit



**MODEL#:PMSW824112030**

- 8ft Sidewalls
- Flat Ceilings
- Thermal Pane Windows

- 55 Year Siding
- Steel Faucets
- Porcelain Sinks

- R Panel Metal Corrugated Roof
- 2x4 Interior Insulated Walls

[www.rgnservicesinc.com](http://www.rgnservicesinc.com)

**NEW**

# “THE KW2”

## 12x39 1x1 Dual Porch Option



**MODEL#:PMSW1244212107**

- 8ft Sidewalls
- Flat Ceilings
- Thermal Pane Windows

- 55 Year Siding
- Steel Faucets
- Porcelain Sinks

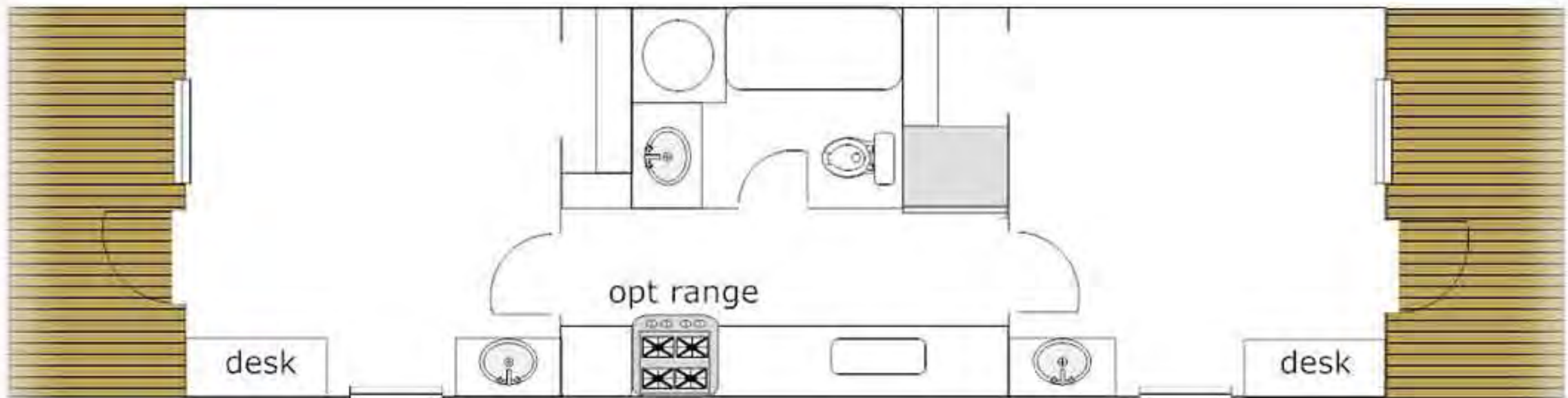
- R Panel Metal Corrugated Roof
- 2x4 Interior Insulated Walls

[www.rgnservicesinc.com](http://www.rgnservicesinc.com)

**NEW**

# “THE KW”

## 12x44 2x1 Dual Porch Park Model



**MODEL#:PMSW1244212028**

- 8ft Sidewalls
- Flat Ceilings
- Thermal Pane Windows

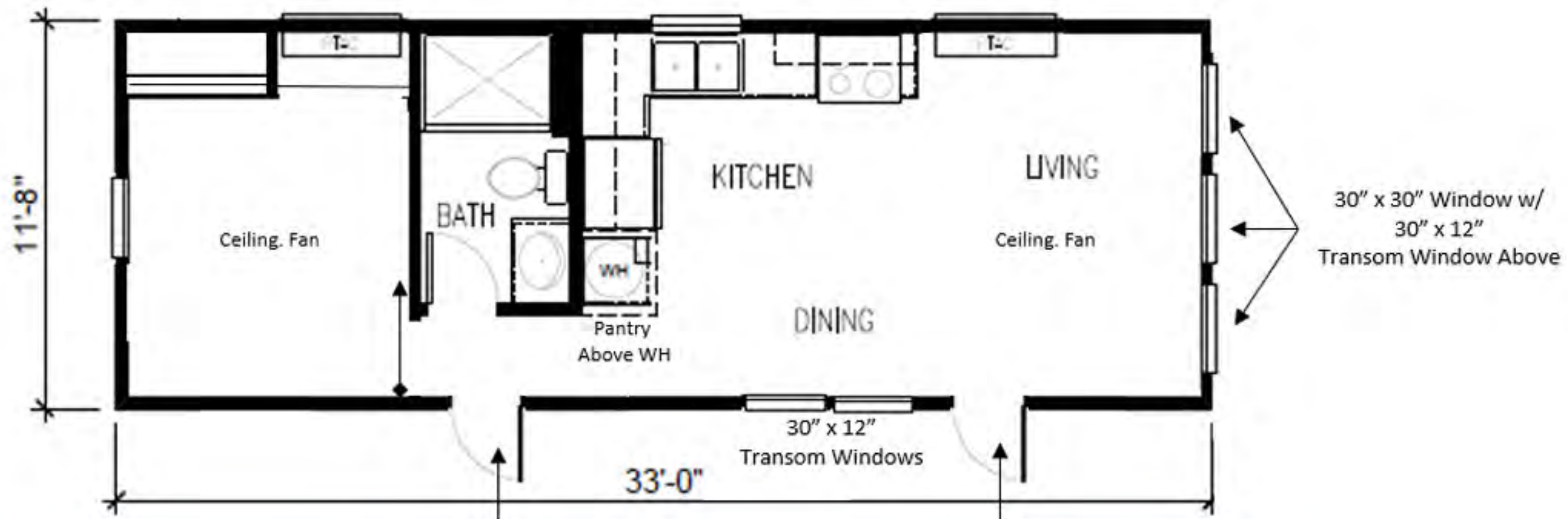
- 55 Year Siding
- Steel Faucets
- Porcelain Sinks

- R Panel Metal Corrugated Roof
- 2x4 Interior Insulated Walls

**NEW**

# “THE ROSA”

## 12x33 1x1 Park Model



**MODEL#:PMSW1233112126**

- 8ft Sidewalls
- Flat Ceilings
- Thermal Pane Windows
- 55 Year Siding
- Steel Faucets
- Porcelain Sinks
- R Panel Metal Corrugated Roof
- 2x4 Interior Insulated Walls

[www.rgnservicesinc.com](http://www.rgnservicesinc.com)

**NEW**

# “THE TERRA”

## 12x33 2x1 Park Model



**MODEL#:PMSW1233212032**

- 8ft Sidewalls
- Flat Ceilings
- Thermal Pane Windows

- 55 Year Siding
- Steel Faucets
- Porcelain Sinks

- R Panel Metal Corrugated Roof
- 2x4 Interior Insulated Walls



## Park Model Standard Specifications

### Interior Specifications

- 2x6 Engineered Joist
- 2x4 Interior Walls
- 8' Foot Sidewalls
- 5/8" OSB Tongue and Groove Floors Throughout
- High Gage Vinyl Flooring Throughout
- Knockdown Flat Ceilings
- Rolled Edge Formica Countertops
- 3/8" Vinyl Covered Sheetrock Throughout (Terry Tweed Fawn)
- 1" ½ Vinyl Wrapped Flat Luan Trim (Millwood Tobacco)
- 2" mini blinds
- Privacy Door Locks in Bathrooms and Master BR
- Brushed Nickel Ceiling Fans in LR & Master BR
- 42" Kitchen Cabinets
- Wire Shelving in Closets
- Up to 2 PTAC units – Shipped Loose
- Black Appliances Package (Refrig, Electric Range, Dishwasher, Microwave)
- R Value Insulation R-11 Walls -R11 Floors R-22 Ceiling
- Panel Interior Doors

### Wet Areas

- 20 Gal WH
- Double Bowl SS Sink (Kitchen)
- 18cu ft Refrigerator RH (Black)
- Coil Top Range (Black)
- Built in Microwave (Black)
- Dishwasher (Black)
- Porcelain Lavatory
- Brushed Nickle Faucets in all Baths
- Light Bar Vanity 3 Lite in bathrooms
- Fiberglass Showers and Tubs
- Elongated Toilets
- 50 CFM Exhaust Fan
- 18"x24" Mirror in GB

### Electrical

- 20-amp Weatherproof Exterior GFI Recep
- GFI In Bathrooms and Kitchen Countertops
- 15 Amp 125V Single Pole Switch
- Interconnected Smoke Detector – Combination Codetector
- 100 Amp Interior Panel Box

### Lights

- Exterior Porch Lights at Entrances
- LED Can Lights LR/Kitchen/DR

### Exterior

- Frame, Roofing, Siding and Windows:
- Detachable Hitch
- 5/12 Pitch Roof
- 7/16 OSB Roof Decking
- 55 Year Smart Panel Siding
- Engineered Trusses
- 2 x 4 Exterior Walls
- Grade 2 Privacy Knob Set
- Access for Water Heaters
- Vinyl Low Emission Thermal Pane Windows
- House Wrap Under Exterior Siding
- Flashing Tape Around Windows and Doors
- 5000 LB Brake and Idler Axles



# Chalet Park Model Standard Specifications

## Interior Specifications

- 2x6 Engineered Joist
- 2x4 Interior Walls
- 9' Foot Sidewalls
- 5/8" OSB Tongue and Groove Floors Throughout
- High Gage Vinyl Flooring Throughout
- Textured Ceilings
- Rolled Edge Formica Countertops
- 1/2" Vinyl Sheetrock Taped & Textured Walls, Trim Ceilings
- R Value Insulation R-11 Walls -R11 Floors R-22 Ceiling
- Interior Panel Doors
- 2" mini blinds

## Wet Areas

- 20 Gal HWT
- Barn Sink
- Porcelain Lavatory
- Brushed Nickle Faucets in all Baths
- Fiberglass Showers and Tubs
- Elongated Toilets
- 24 x 36 Mirror in MB
- 50 CFM Exhaust Fan
- 18"x24" Mirror in GB

## Electrical

- 20-amp Weatherproof Exterior GFI Recep
- GFI In Bathrooms and Kitchen Countertops
- Interconnected Smoke Detector with Battery Backup
- 100 Amp Interior Panel Box

- Privacy Door Locks in Bathrooms and Master BR
- Brushed Nickel Ceiling Fans in LR & Master BR
- 42" Kitchen Cabinets
- Wire Shelving in Closets
- Up to 2 PTAC units – Shipped Loose
- Upgraded baseboard/window/door casings
- Black Appliances Package (Refrig, Electric Range, Dishwasher, Microwave)
- Garbage Disposal
- Countertops w/ Tile Backsplash
- Trim Around Mirrors

## Lights

- Exterior Porch Lights at Entrances
- LED Can Lights LR/Kitchen/DR

## Exterior

- Frame, Roofing, Siding and Windows
- Detachable Hitch
- 5/12 Pitch Roof
- 7/16 OSB Roof Decking
- Engineered Trusses
- 2 x 4 Exterior Walls
- Grade 2 Privacy Knob Set
- Access for Water Heaters
- Vinyl Low Emission Thermal Pane Windows
- House Wrap Under Exterior Siding
- Flashing Tape Around Windows and Doors
- 5000 LB Brake and Idler Axles
- Lap Siding w/OSB Under
- Residential Fascia
- Upgraded Porch – Rails (vinyl), Columns 4x6 (wrapped), Decking (composite)
- Residential Outswing House Type Door



Direct: 254.246.5268  
Fax: 817.719.9291



[www.rgnservicesinc.com](http://www.rgnservicesinc.com)  
[facebook.com/rgnservices](https://facebook.com/rgnservices)



820 Industrial Loop Blvd  
Breckenridge, TX 76424



# Exterior Elevations

Hitch-End Elevation - PM



Hitch-End Elevation - PM w/Porch

